

Cabinotch Reference Guide and Order Form



Revolutionize your business with Cabinotch!



For more information contact:
www.cabinotch.com | 877.413.4299 | info@cabinotch.com

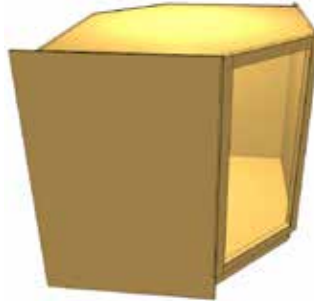
Cabinotch Base Cabinets

BC
Base Cabinet



This is a full-height base cabinet with no drawers. Available with up to 2 adjustable shelves.

BCANG
Base Cabinet Angle Fixed Depth



This cabinet is a 45 degree base corner. It works great as a sink base or a lazy susan. Available with no shelves or with one adjustable shelf. NOTE: Shelf must be installed BEFORE the cabinet top.

BCANGD1
Base Cabinet Angle Fixed Depth
1 Drawer



This cabinet is a 45 degree base corner. It works great as a sink base or a lazy susan. NOTE: Shelf must be installed BEFORE installing cabinet top.

BCBLCL
Base Cabinet Blind Corner Left



This cabinet is a blind corner base. It is configured to be installed 1in out of the corner. Available with no shelves or with one adjustable shelf.

BCBLCLD1
Base Cabinet Blind Corner Left
1 Drawer



This cabinet is a blind corner base. It is configured to be installed 1in out of the corner. Available with no shelves or with one adjustable shelf.

BCBLCR
Base Cabinet Blind Corner Right



This cabinet is a blind corner base. It is configured to be installed 1in out of the corner. Available with no shelves or with one adjustable shelf.

BCBLCRD1
Base Cabinet Blind Corner Right
1 Drawer



This cabinet is a blind corner base. It is configured to be installed 1in out of the corner. Available with no shelves or with one adjustable shelf.

BCCOR
Base Cabinet Corner



This cabinet is a 90 degree base corner. It works great with a shelf or with a lazy susan. Available with no shelves or with one adjustable shelf. NOTE: Shelf must be installed BEFORE installing cabinet top.

BCCORFDP
Base Cabinet Corner Full Depth



This is an OVERSIZED 90 degree base corner. Can be ordered with or without an adjustable shelf. NOTES: Shelf MUST be installed BEFORE installing cabinet top. This cabinet is oversized from our standard BC COR and may not fit thru your doorway.

Cabinotch Base Cabinets

continued

BCD1
Base Cabinet 1 Drawer



This base cabinet has a drawer opening at the top fixed at 5in. Available with no shelves or with one adjustable shelf.

BCD1FS1
Base Cabinet 1 Drawer 1 Fixed Shelf



This base cabinet has a drawer opening at the top fixed at 5in. It also includes a fixed shelf behind the drawer rail. Works great for trash can pull-outs or audio equipment for entertainment centers. Available with one adjustable shelf.

BCD2EO
Base Cab 2 Drw Equal Opening



This is a 2-drawer base cabinet with equal openings. Works perfectly as a filing cabinet.

BCD3
Base Cabinet 3 Drawers



This is a 3-drawer base cabinet with one 5in top drawer opening and two equal height lower drawers.

BCD4
Base Cabinet 4 Drawers



This is a 4-drawer base cabinet with three 5in top drawer openings and one variable height lower drawer opening.

BCD4EO
Base Cab 4 Drw Equal Opening



This is a 4-drawer base cabinet with all drawers having equal openings. Ideal for use as a filing cabinet or storage.

BCMIF015
Base Cabinet Microwave
Fixed Opening 15 1/2



This base cabinet is built for a counter-type microwave or a built-in microwave with the proper trim kit. The bottom opening is variable and has indexing in the back for a drawer.

BCO1D2
Base Cabinet 1 Opening 2 Drawers



This base cabinet has two equal drawer opening at the top fixed at a height of 5in. Available with no shelves or with one adjustable shelf.

BCVCD2EO
Vanity Cabinet 2 Drawer Equal Openings



This cabinet works very well as a double bowl vanity cabinet with equal drawer openings on each side. This cabinet does not have vertical partitions or shelves.

Cabinotch Base Cabinets

continued

BCVCD2FO16
Vanity Cabinet Fixed Opening 16in
2 Drawer



Vanity cabinet for single bowl application. The center drawer front is a fixed size of 16 1/2in. The other two drawer openings are variable.

BCVCD2FO20
Vanity Cabinet Fixed Opening 20in
2 Drawer



Vanity cabinet for single bowl application. The center drawer front is a fixed size of 20in. The other two drawer openings are variable.

BCVCD5FO12
Vanity Cabinet Center 3 Drawer Stack
Fixed at 12in Wide



This cabinet works well as a Double Bowl vanity. Contains a center stack of 12in wide drawers, with equal width openings on both sides. Does not have shelves or vertical partitions.

BCVCD5FO18
Vanity Cabinet Center 3 Drawer Stack
Fixed at 18in Wide



This Cabinet works well as a Double Bowl vanity. Contains a center stack of 18in wide drawers, with equal width openings on both sides. Does not have shelves or vertical partition.

BCVCD6FO21
Vanity Cabinet Center 3 Drawer Stack
L&R Fixed Opening 21in



Vanity Cabinet for double bowl application. This cabinet has three 5in top drawer openings and three equal height lower drawer openings. To the left and right of center drawer stack are fixed openings locked at 21in.

BCVCD6FO27
Vanity Cabinet Center 3 Drawer Stack
L&R Fixed Opening 27in



Vanity Cabinet for double bowl application. This cabinet has three 5in top drawer openings and three equal height lower drawer openings. To the left and right of center drawer stack are fixed openings locked at 27in.

BCVCD6FO33
Vanity Cabinet Center 3 Drawer Stack
L&R Fixed Opening 33in



Vanity Cabinet for double bowl application. This cabinet has three 5in. top drawer openings and three equal height lower drawer openings. To the left and right of center drawer stack are fixed openings locked at 33in.

BCVCD9FO18
Vanity Cabinet 9 Drawer
Fixed Opening 18in



Vanity Cabinet for single bowl application. The center drawer opening is a fixed size of 18in. This cabinet has one 5in top drawer opening and three equal height lower drawer openings of equal widths on each side of center opening. This cabinet does not include vertical partitions.

BCVCD9FO24
Vanity Cabinet 9 Drawer
Fixed Opening 24in



Vanity Cabinet for single bowl application. The center drawer opening is a fixed size of 24in. This cabinet has one 5in top drawer opening and three equal height lower drawer openings of equal widths on each side of center opening. This cabinet does not include vertical partitions.

Cabinotch Base Cabinets

continued

BCVCDL2
Vanity Cabinet 2 Drawer Left



Vanity cabinet for single bowl application. Left drawer and right door are equal widths.

BCVCDR2
Vanity Cabinet 2 Drawer Right



Vanity cabinet for single bowl application. Right drawer and left door are equal widths.

DS
Desk Spacer



Desk spacer with indexing holes for drawer mounting.

Cabinotch Tall Cabinets

T485
Tall Cabinet Fixed Lower 48.5in



This tall pantry cabinet has a fixed lower opening of 48.5in. The top opening is variable. Works great if you plan to use rollout drawers in the lower section. Available with up to five adjustable shelves.

T56
Tall Cabinet Fixed Lower 56in



This tall cabinet has a fixed lower opening of 56in. The top opening is variable. Works great if you plan to use rollout drawers in the lower section. Also ideal for a broom or utility cabinet. Available with up to five adjustable shelves.

T64
Tall Cabinet Fixed Lower 64in



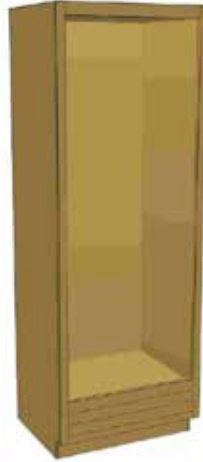
This tall cabinet has a fixed lower opening of 64in. The top opening is variable. Works great if you plan to use rollout drawers in the lower section. Also ideal for a broom or utility cabinet. Available with up to five adjustable shelves.

TEQ
Tall Cabinet EQ 4 Shelves



This tall cabinet has two equal height openings. This cabinet has four shelves.

TOV
Tall Oven



This cabinet comes with all the necessary parts to custom fit a variety of built in appliances like ovens and warming drawers or even a microwave. Cabinet is shipped with three rails and shelves that can be installed in any configuration that you will need. Cabinet is also line bored for easy shelf installation.

TREF70
Tall Cabinet 70in Refrigerator



This tall cabinet is designed for a built in appliance look. This cabinet already has legs extended 70in below the bottom of the cabinet. NOTE: The cabinet height you order should not include the leg height. Example: If you order this cabinet 26in tall, then your cabinet will come 96in overall height. Available with no shelves or with one adjustable shelf.

TREF71
Tall Cabinet 71in Refrigerator



This tall cabinet is designed for a built in appliance look. This cabinet already has legs extended 71in below the bottom of the cabinet. NOTE: The cabinet height you order should not include the leg height. Example: If you order this cabinet 25in tall, then your cabinet will come 96in overall height. Available with no shelves or with one adjustable shelf.

TREF72
Tall Cabinet 72in Refrigerator



This tall cabinet is designed for a built in appliance look. This cabinet has legs extended 72in below the bottom of the cabinet. Please note the cabinet height you order should not include the leg height. Example: If you order this cabinet 24in tall, then your cabinet will come 96in overall height. Available with no shelves or with one adjustable shelf.

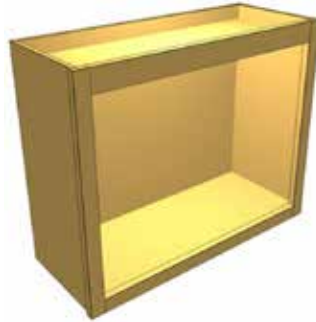
Cabinotch Upper Cabinets

SHELF
Custom Shelf



Custom-sized shelf 3/4in plywood.

UC
Upper Cabinet



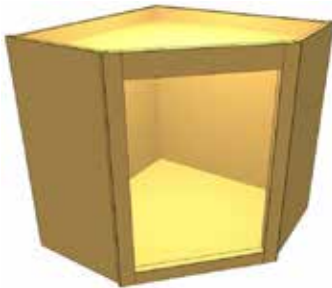
This cabinet works well as an upper cabinet or bookcase. Available with up to six adjustable shelves.

UCAG
Upper Cabinet Appliance Garage



Upper cabinet with an 18in tall appliance garage. NOTE: The order height of your cabinet should not include the additional 18in height. Example: If you order this cabinet 30in tall, then your cabinet will come 48in overall height. Available with up to three adjustable shelves.

UCANG
Upper Cabinet Angle Fixed Depth



Angled upper cabinet with 12-16in sides. With a five minute assembly time, this extremely profitable cabinet puts money straight into the shop owner's pocket. Available with up to three adjustable shelves.

UCANGAG
Upper Cabinet Angle Appliance Garage Fixed Depth



Angled upper cabinet with 12in-16in sides and an 18in tall appliance garage. Note: The order height of your cabinet should not include the additional 18in height. Example: If you order this cabinet 30in tall then your cabinet will come 48in overall height. Five minute assembly time. Available with up to three adjustable shelves.

UCBLCL
Upper Cabinet Blind Corner Left



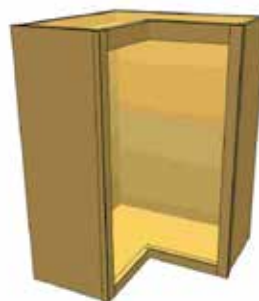
This left blind corner upper cabinet is designed to sit 1in out of the corner of your wall corner. Available with up to three adjustable shelves.

UCBLCR
Upper Cabinet Blind Corner Right



This right blind corner upper cabinet is designed to sit 1in out of the corner of your wall corner. Available with up to three adjustable shelves.

UCCOR
Upper Cabinet Corner



This cabinet is a corner upper. NOTE: This unit is 12in-16in deep on each side. Available with up to three adjustable shelves.

UCDBLFO12
Double Upper Cabinet Fixed Opening 12in



This is a double upper cabinet. It has a 12in fixed opening on the upper section and a variable height bottom opening. Available with up to three adjustable shelves.

Cabinotch Upper Cabinets

continued

UCMICFO16
Wall Cabinet Microwave
Fixed Opening 16 1/4in



This cabinet has a fixed 16.25in lower opening, and a variable height upper section. This cabinet is primarily designed for a built-in microwave upper. Available with up to two adjustable shelves.

UCMICFO19
Wall Cabinet Microwave
Fixed Opening 19 1/4in



This cabinet has a fixed 19.25in lower opening, and a variable height upper section. This cabinet is primarily designed for a built-in microwave upper. Available with up to two adjustable shelves.

UCMICFO22
Wall Cabinet Microwave
Fixed Opening 22 1/4in



This cabinet has a fixed 22.25in lower opening, and a variable height upper section. This cabinet is primarily designed for a built-in microwave upper. Available with up to two adjustable shelves.

UCMICRFO15
Wall Cabinet Microwave OTR
Fixed Opening 15in



This cabinet is designed for placement above a range to receive an over-the-range microwave. This cabinet has 15in drop down sides. NOTE: The order height of your cabinet should not include the additional 15in height. Example: If you order this cabinet 30in tall then your cabinet will come 45in overall height. Available with up to three adjustable shelves.



Accessories

These accessories are offered to assist you with your cabinet project needs. Below you will find 5mm shelf pins and various widths of 8' rail stock.

BUILD SHEETS:

700001
Assembly/Build Sheets

SHELF PINS:

800001
Bulk Bag of Shelf Pins (100 count)

PANEL MATERIAL:

800008
3/4-4 x 8 UV Coated on 2 Sides; Plywood Shelf Material

800009
1/2-4 x 8 UV Coated on 1 Side; Plywood Cab Carcass

Cabinotch Cabinet Box Specifications

General Information

- Cabinets are available in .001" increments.
- Choose either pre-finished maple UV interior, or unfinished interior to match wood species of the face frame.
- Side, top, and back panels are 1/2" PureBond® plywood.
- Cabinet box plywood is light color domestic hardwood unless otherwise specified.
- Back panel is flush with the side panels.
- Shelves are 3/4" thick plywood, full depth, and adjustable.
- Shelves are sized 1/8" less than the total inside width for easy adjustment.
- Cabinets with shelves have the side panels bored for 5mm shelf pins on 32mm centers (pins not included).
- Face frames are available in the following wood species:

Alder	Poplar
Cherry	Walnut
Hickory	White Oak
Hard Maple	Soft Maple
Red Oak	

- Face frames are wide belt sanded to 220 grit (palm sanding recommended before finishing).
- All stiles, mid, and bottom rails are 1 1/2" wide, 3/4" thick solid wood.
- All Wall and Tall cabinets have 2 1/4" wide, 3/4" thick solid wood top rails.
- 1/4" outside scribe included on all frames.
- Toe kick is 4" high by 3" deep.

Blind Cabinet Calculations

- Blind Wall Cabinet width is calculated by the following formula:
14 3/4" + the cabinet opening width = total cabinet width
- Blind Base Cabinet width is calculated by the following formula:
27 1/2" + the cabinet opening width = total cabinet width

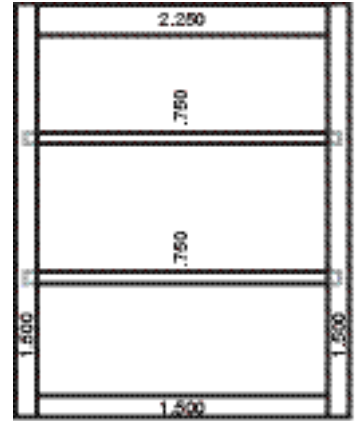
Assembly and Shipping

- These are RTA Cabinets—require quick and easy assembly
- Fed Ex Freight shipping from Owensboro, KY

Custom Stile and Rail Options

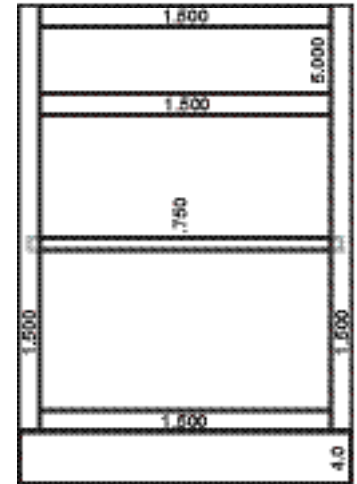
Options can be applied to base and wall cabinets as defined below. Charges will be added to the individual cabinet boxes. Specify option on order form.

WALL	BASE	TALL	OPTION
NA	■	■	A Left Stile extended down 4" to floor
NA	■	■	B Right Stile extended down 4" to floor
■	■	■	C 5.5" Bottom Rail, No Toe
■	■	■	D 3" Left Stile (2.25" scribe)
■	■	■	E 3" Right Stile (2.25" scribe)
■	■	■	F 3/4" Scribe Left Stile
■	■	■	G 3/4" Scribe Right Stile



Upper Cabinet:

- 2.25" Top Rail
- 1.5" Stiles and Bottom Rail
- 0.25" Outside Scribe
- 1.69" Top Scribe
- 0.935" Bottom Scribe



Base Cabinet:

- 1.5" All Rails and Stiles
- 5" Top Drawer Opening
- 4" Toe Height
- 3" Toe Depth

Tall Cabinet:

- 2.25" Top Rails
- 1.5" Stiles, Mid & Bottom Rails



Cabinotch Order Form

ORDERED BY:	CUSTOMER#:
ORDER DATE:	
COMPANY NAME:	
BILLING ADDRESS:	
ADDRESS :	
CITY:	STATE: ZIP:
SHIPPING ADDRESS:	
ADDRESS :	
CITY:	STATE: ZIP:
PHONE:	EMAIL ADDRESS:
P.O. #:	JOB #:
CARD TYPE:	<input type="checkbox"/> VISA <input type="checkbox"/> MASTERCARD
CARD #:	
NAME ON CARD:	
EXP. DATE:	CVV # (SECURITY):

QTY	CABINET STYLE #	WIDTH	HEIGHT	DEPTH	SPECIES	RAW INT.	OPTIONS A-G	UNIT	PRICE
ADDITIONAL/NOTES:								SUBTOTAL	
								TAX	
								FREIGHT	
								TOTAL	

CUSTOMER APPROVAL: _____ DATE: _____