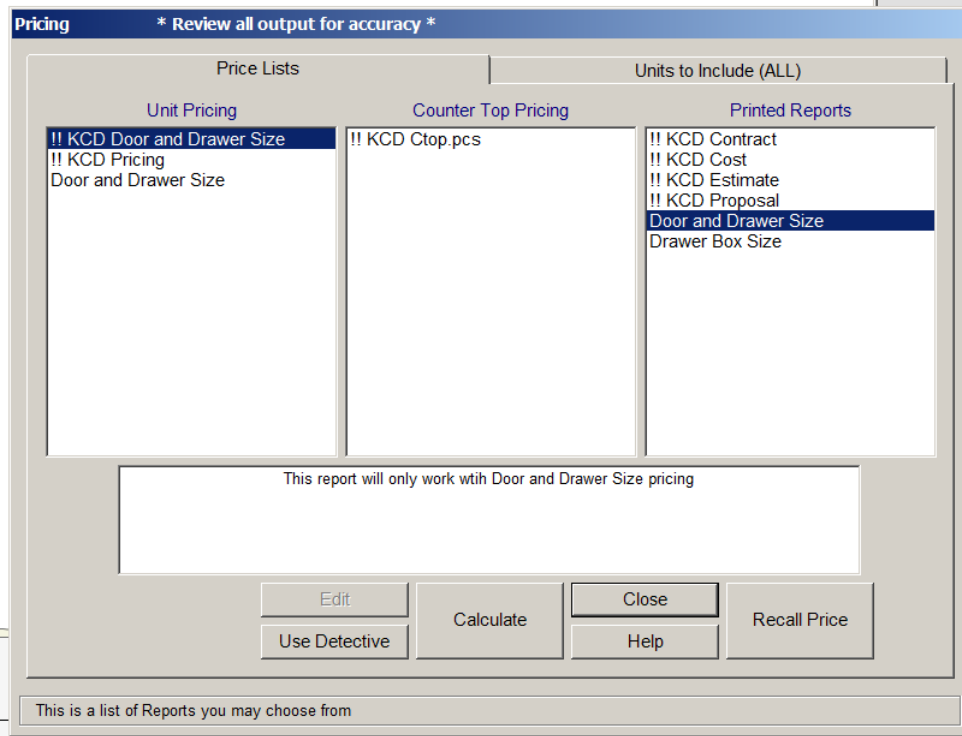


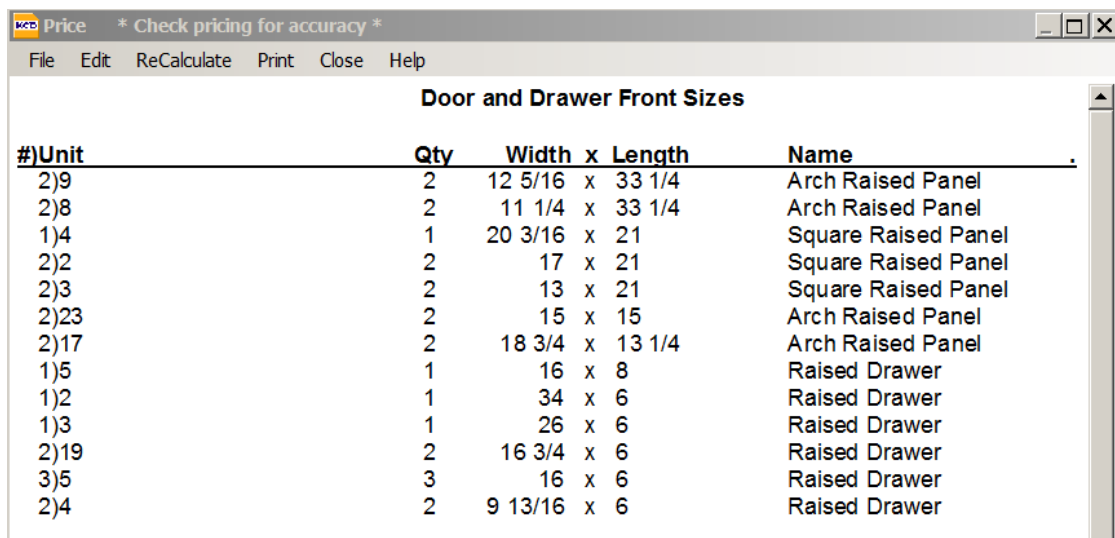
# Running Door, Drawer Size, & Drawer Box Reports

## Door & Drawer Front Sizes:

From the Toolbar, choose the Price Button and click the options shown below (highlighted in Blue) and then you can click calculate



This will calculate a list of all door and drawer fronts for the job you are working on:



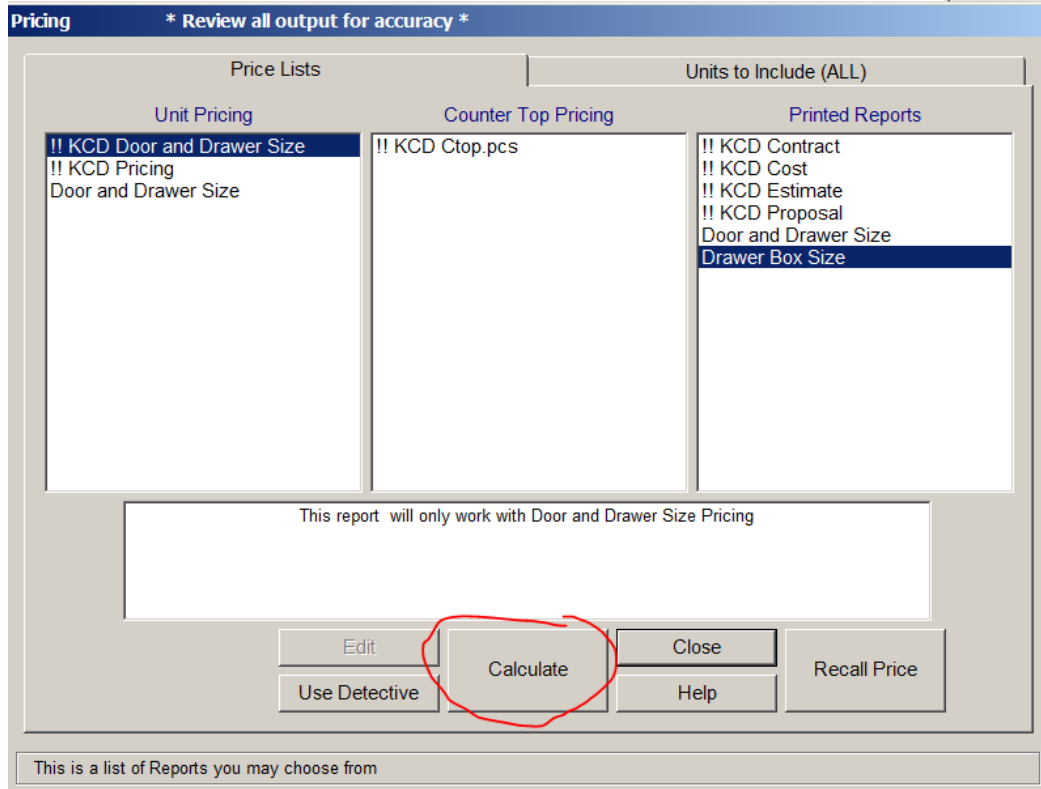
The screenshot shows a software window titled "Price" with a subtitle "\* Check pricing for accuracy \*". It has a menu bar with "File", "Edit", "ReCalculate", "Print", "Close", and "Help". The main content area displays a table titled "Door and Drawer Front Sizes".

| #)Unit | Qty | Width   | x | Length | Name                |
|--------|-----|---------|---|--------|---------------------|
| 2)9    | 2   | 12 5/16 | x | 33 1/4 | Arch Raised Panel   |
| 2)8    | 2   | 11 1/4  | x | 33 1/4 | Arch Raised Panel   |
| 1)4    | 1   | 20 3/16 | x | 21     | Square Raised Panel |
| 2)2    | 2   | 17      | x | 21     | Square Raised Panel |
| 2)3    | 2   | 13      | x | 21     | Square Raised Panel |
| 2)23   | 2   | 15      | x | 15     | Arch Raised Panel   |
| 2)17   | 2   | 18 3/4  | x | 13 1/4 | Arch Raised Panel   |
| 1)5    | 1   | 16      | x | 8      | Raised Drawer       |
| 1)2    | 1   | 34      | x | 6      | Raised Drawer       |
| 1)3    | 1   | 26      | x | 6      | Raised Drawer       |
| 2)19   | 2   | 16 3/4  | x | 6      | Raised Drawer       |
| 3)5    | 3   | 16      | x | 6      | Raised Drawer       |
| 2)4    | 2   | 9 13/16 | x | 6      | Raised Drawer       |

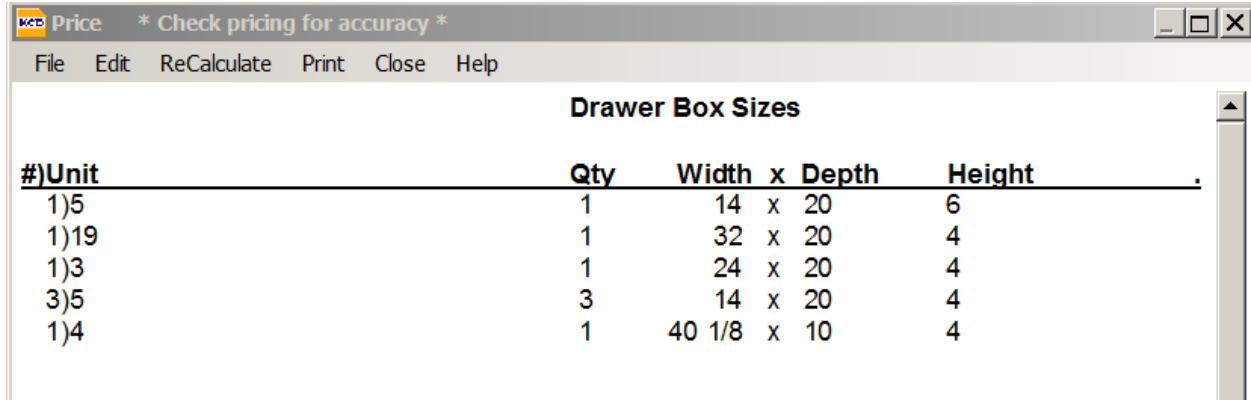
You can then choose to print it out or save and send to your door and drawer manufacturer.

**Drawer Box Sizes:**

This report runs the same way, by clicking on the options shown below and clicking Calculate:



You will then have a report you can either print out or save and send to your drawer box supplier:



The screenshot shows a software window titled "Price" with a subtitle "\* Check pricing for accuracy \*". It has a menu bar with "File", "Edit", "ReCalculate", "Print", "Close", and "Help". The main content area displays a table titled "Drawer Box Sizes".

| #)Unit | Qty | Width x Depth | Height |
|--------|-----|---------------|--------|
| 1)5    | 1   | 14 x 20       | 6      |
| 1)19   | 1   | 32 x 20       | 4      |
| 1)3    | 1   | 24 x 20       | 4      |
| 3)5    | 3   | 14 x 20       | 4      |
| 1)4    | 1   | 40 1/8 x 10   | 4      |