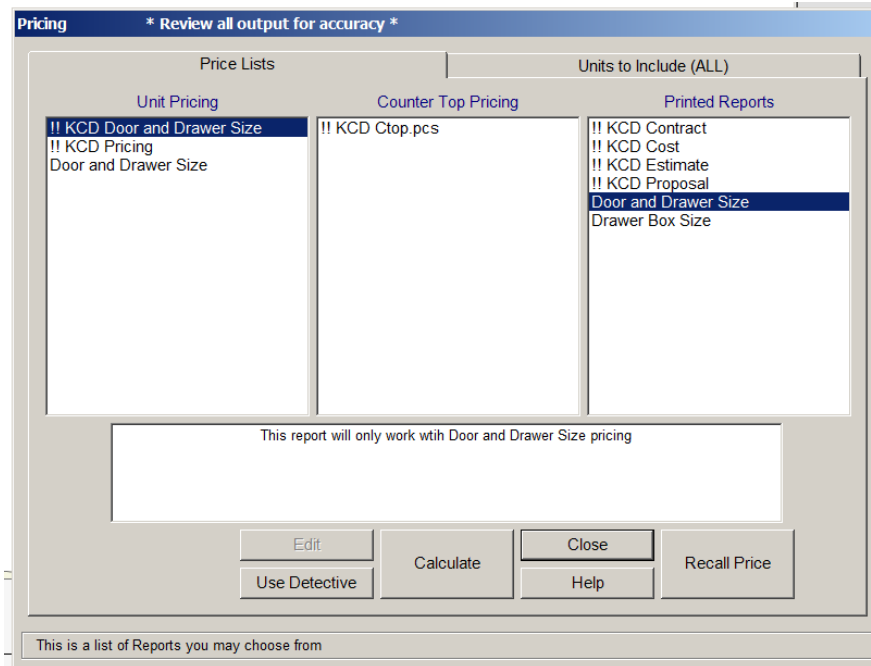


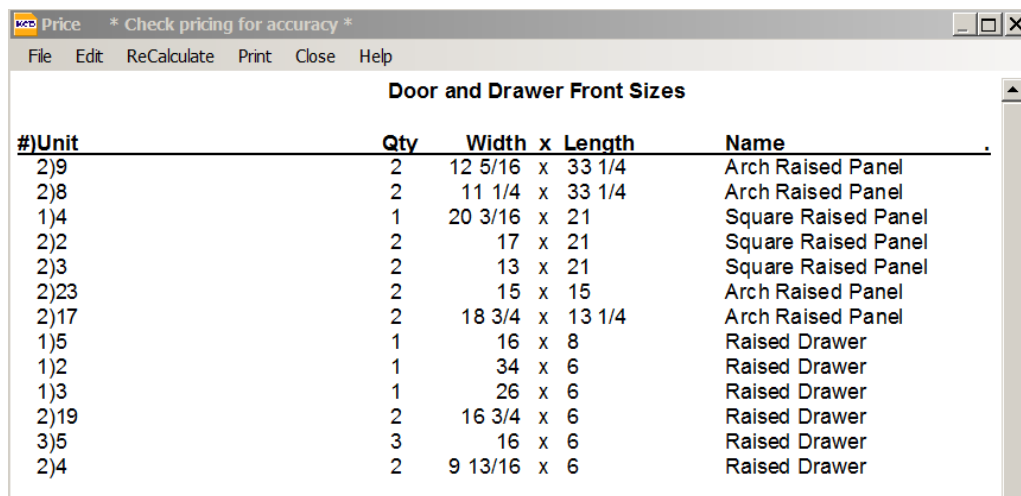
Running Door, Drawer Size, & Drawer Box Reports

Door & Drawer Front Sizes:

From the Toolbar, choose the Price Button and click the options shown below (highlighted in Blue) and then you can click calculate



This will calculate a list of all door and drawer fronts for the job you are working on:



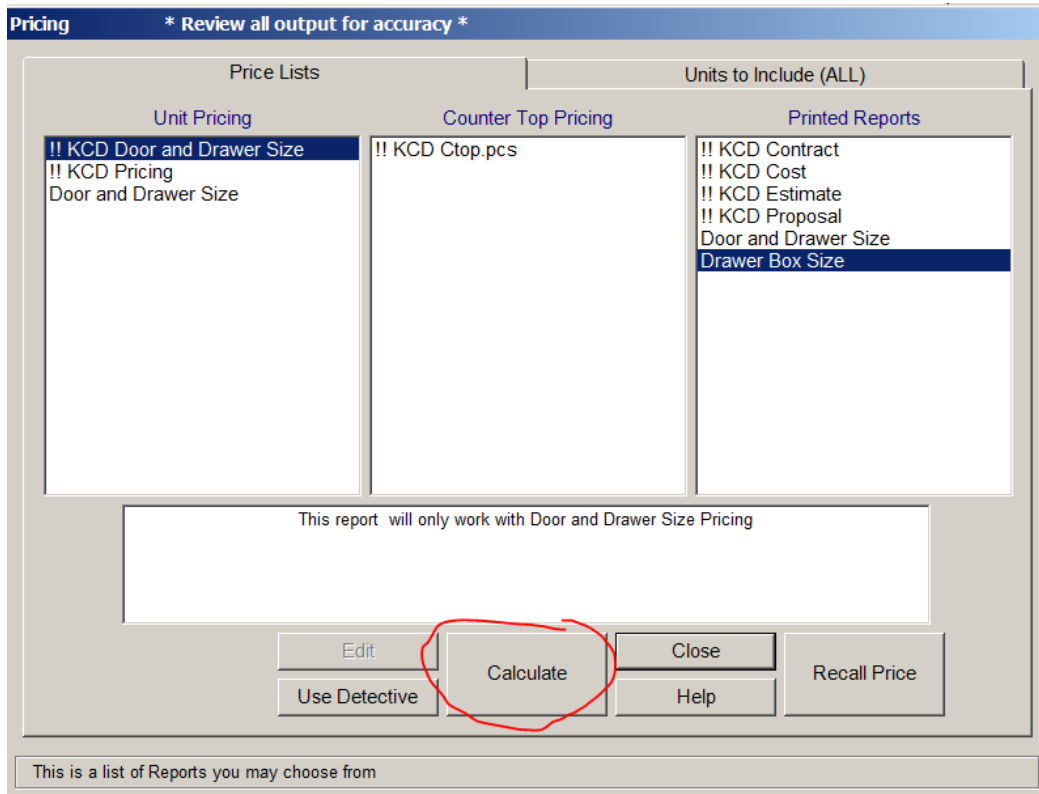
The screenshot shows a software window titled "Price" with a subtitle "* Check pricing for accuracy *". It has a menu bar with "File", "Edit", "ReCalculate", "Print", "Close", and "Help". The main content area displays a table titled "Door and Drawer Front Sizes".

#)Unit	Qty	Width	x	Length	Name
2)9	2	12 5/16	x	33 1/4	Arch Raised Panel
2)8	2	11 1/4	x	33 1/4	Arch Raised Panel
1)4	1	20 3/16	x	21	Square Raised Panel
2)2	2	17	x	21	Square Raised Panel
2)3	2	13	x	21	Square Raised Panel
2)23	2	15	x	15	Arch Raised Panel
2)17	2	18 3/4	x	13 1/4	Arch Raised Panel
1)5	1	16	x	8	Raised Drawer
1)2	1	34	x	6	Raised Drawer
1)3	1	26	x	6	Raised Drawer
2)19	2	16 3/4	x	6	Raised Drawer
3)5	3	16	x	6	Raised Drawer
2)4	2	9 13/16	x	6	Raised Drawer

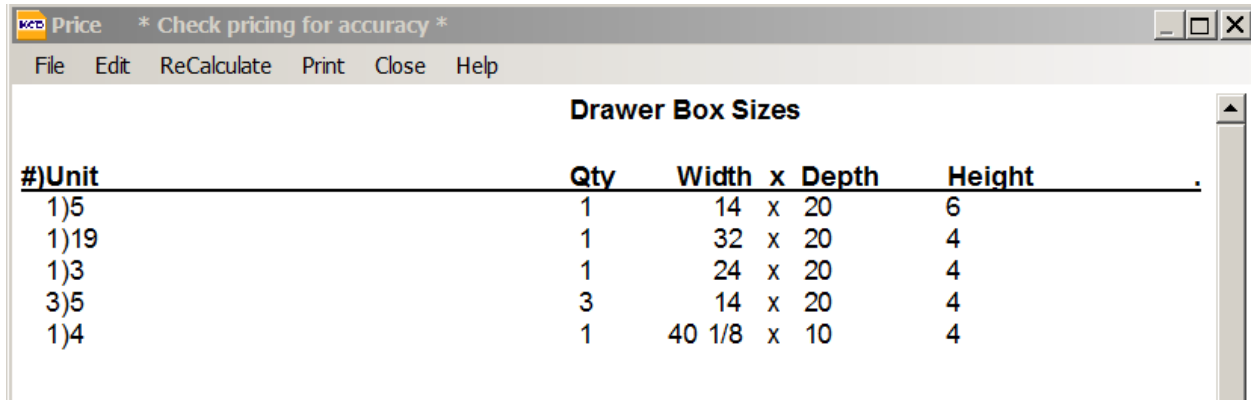
You can then choose to print it out or save and send to your door and drawer manufacturer.

Drawer Box Sizes:

This report runs the same way, by clicking on the options shown below and clicking Calculate:



You will then have a report you can either print out or save and send to your drawer box supplier:



The screenshot shows a software window titled "Price" with a subtitle "* Check pricing for accuracy *". It has a menu bar with "File", "Edit", "ReCalculate", "Print", "Close", and "Help". The main content is a table titled "Drawer Box Sizes".

#)Unit	Qty	Width x Depth	Height
1)5	1	14 x 20	6
1)19	1	32 x 20	4
1)3	1	24 x 20	4
3)5	3	14 x 20	4
1)4	1	40 1/8 x 10	4