

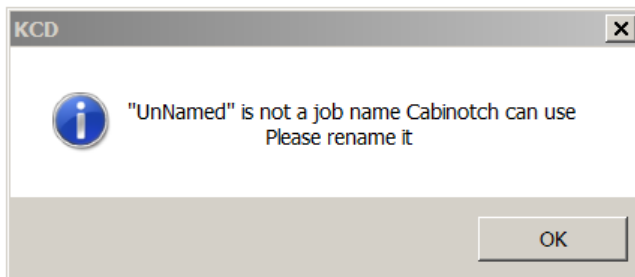
## !!!! INTRODUCING !!!!

# The Cabinotch KCD One-Click Quoting Tool

*You are going to LOVE this, by the way!!!*

We have simplified the process of quoting your KCD drawn Cabinotch designs. Getting an accurate quote for your Cabinotch boxes is now faster and easier. But there are **3 important points** that you must remember at all times.

1. The One-Click Quoting Tool is only available in **KCD v10**. If you are using version 9, you will not be able to utilize this tool until you upgrade from v9 to v10. Please call KCD at 508-760-1140 for more information on how to upgrade your key today.
2. You **must** be connected to the internet at the time of Exporting the Cabinotch Order File. The Export function will place the drawing in your cart, but only if internet access is available.
3. **YOU MUST SAVE and NAME** the job PRIOR to beginning the Export process- otherwise you will get this error message:



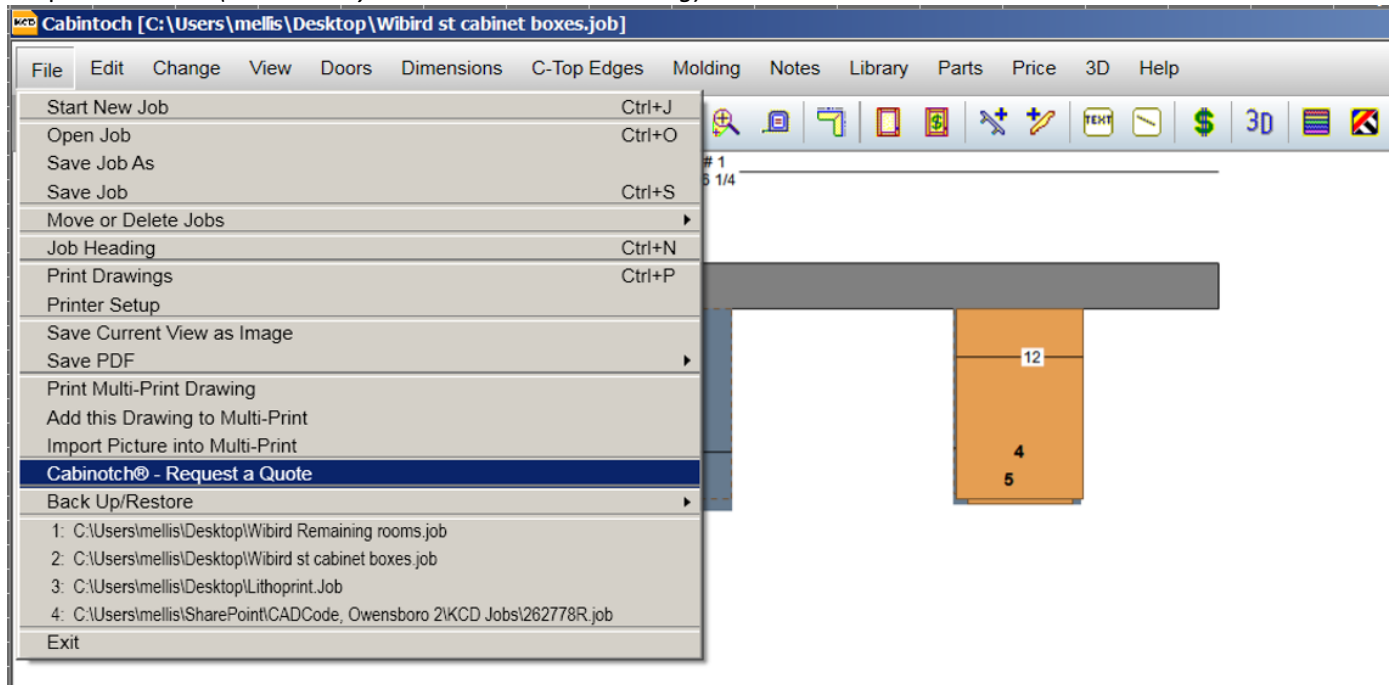
This will prompt you to **name and save** the file. This should be standard procedure when drawing jobs for quoting purposes, and if you make changes to the .job file, it is always important to *add a revision number* to that changed file. For example= Johnson kitchen **REV1**

## First, let's get you setup, it only hurts for a second!!

There are a couple of important things you will need to take care of the first time you try the One-Click Quoting Tool. They revolve around the communication between the KCD Software and the Cabinotch Website.

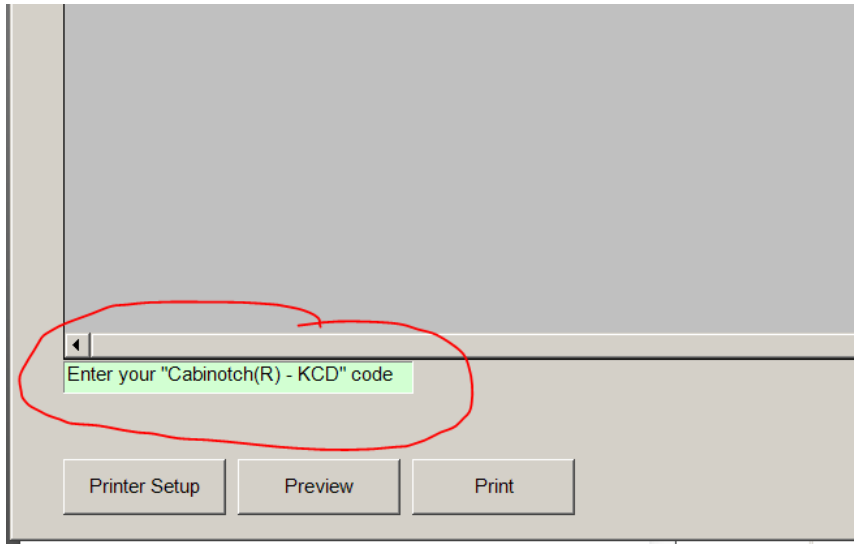
This is why an internet connection is required. You will need your Cabinotch KCD Account # handy - you have seen this code for several months now - this is where it becomes useful:

From the KCD software, navigate to the "File" tap and select "Cabinotch®-Request a Quote" from the drop down menu (*make sure you are in a current drawing*).



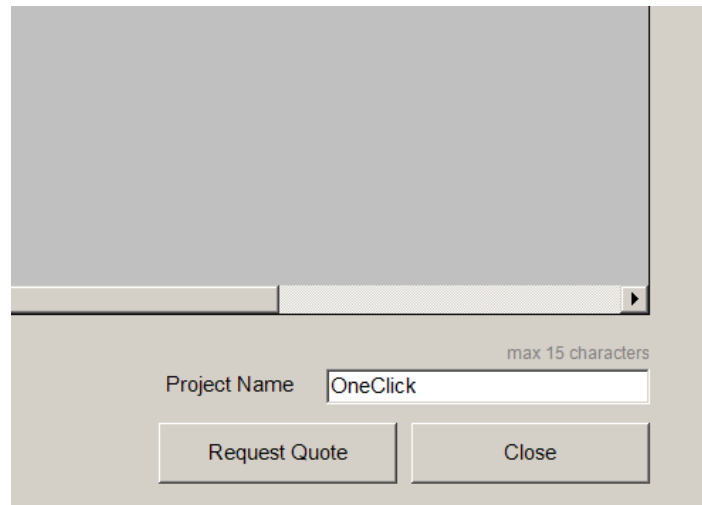
Your Cabinotch KCD Code can be found by logging into your account at [www.cabinotch.us](http://www.cabinotch.us). IF you need further assistance, you can always call your Sales Rep or Customer Service to help you with code retrieval. The example to the right is what you would see when logging into your Cabinotch account.

Customer: **Matt Ellis**  
 Customer ID: **100386**  
 Company: Cabinotch  
 Phone: 0  
 Tax exempt: N  
 Distributor: Cabinotch Direct  
 KCD Code: [REDACTED]



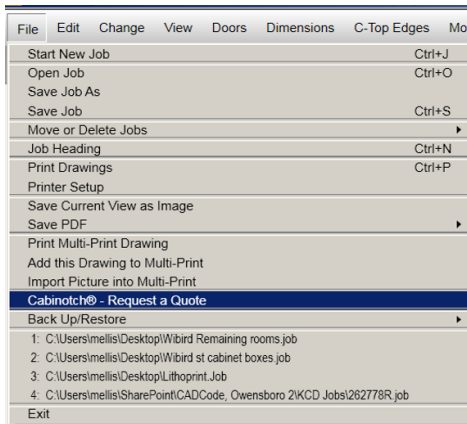
The first time the Validation report is run, in the lower left hand corner (red circle), you will find a box in GREEN where you will need to enter your Cabinotch account number (as referenced on pg2 of Help Doc). Double click in this box and type the number in.

Now we want you to start over. Close the dialog by clicking CLOSE in the right hand corner.



**Now we are ready to get started on a new quote!**

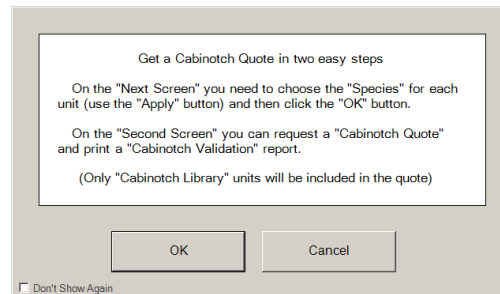
## Let's Get Started!!



Once again, select “File” in your KCD toolbar and scroll down and choose the **Cabinotch®- Request a Quote**.

*Remember that the job must be saved prior to this step or you will get this error message from page 1.*

If you have named and saved the job, you will get this pop up and you'll be good to go:



### Next step: Species Selection

This is very familiar to all, but now, if you have added cabinets since the last time you saved, you will be prompted to select species.....no more invalids due to forgetting this step!

SPECIES

Choose Species

Unit	Name	Room	Library	SPECIES
1	Top Cabinet	Room 1	Cabinotch	Cherry
2	Top 45 Corner	Room 1	Cabinotch	Cherry
3	LazySusan Base	Room 1	Cabinotch	Cherry
4	Sink Base	Room 1	Cabinotch	Cherry
5	Base 4 Drawer	Room 1	Cabinotch	Cherry
6	Top Cabinet (Ref)	Room 1	Cabinotch	Cherry
7	Dishwasher/Panel	Room 1	Cabinotch	Cherry
8	Top Cabinet	Room 1	Cabinotch	Cherry
9	Pantry	Room 1	Cabinotch	Cherry
10	Tray Cabinet	Room 1	Cabinotch	Cherry
11	Base Cabinet	Room 2	Cabinotch	Cherry
12	Base Cabinet	Room 2	Cabinotch	Cherry
13	Top Cabinet	Room 2	Cabinotch	Cherry
14	Top Cabinet	Room 2	Cabinotch	Cherry
15	Base Cabinet	Room 1	Cabinotch	Cherry
16	Cooktop 3 Drawer	Room 1	Cabinotch	Cherry
17	Base Cabinet	Room 1	Cabinotch	Cherry
18	Waloven 2 Door	Room 1	Cabinotch	Cherry
19	Top Cab (Stove Mic)	Room 1	Cabinotch	Cherry
20	Top Cabinet	Room 1	Cabinotch	Cherry
21	Top Cabinet	Room 1	Cabinotch	Cherry
22	Ref Top Extended Side	Room 1	Cabinotch	Cherry
23	Refrigerator/Panel	Room 1	Cabinotch	Cherry
24	Base Utility 2 Drawer	Room 1	Cabinotch	Cherry
25	Compactor/Panel	Room 1	Cabinotch	Cherry
26	Base Panel Left	Room 1	Cabinotch	Cherry
27	Wine Cooler	Room 1	Cabinotch	Cherry
28	Base 3 Drawer	Room 1	Cabinotch	Cherry
29	Base Cabinet No Drawer	Room 1	Cabinotch	Cherry

Change Units  
 Entire Job  
 By Unit  
 By Room  
 By Library

Right-Click a cell to change its value - Click a column heading to sort by that column  
 Click the 'Apply' button to make changes

Same as before- once you have selected a species for all cabinets, click **"ok"** and you will be presented with the Validation report screen.

Note- the Invalid cabinets in this order are highlighted in blue.

You may feel the need to do a "print preview" for this report to see all of the details and research the reason(s) why these cabinets are invalid.

You can also choose print for a paper copy.

Review All for Accuracy

Unit	Qty	Code	Description	Species	Int. Ply	Side L	Side R	3/4 Scribe L	3/4 Scribe R	3/4 Sides	Shelves	Show Legend
1	1	UC S2	Top Cabinet	Cherry	Cherry	U	F	N	N	N	2	S
2	1	UCANG S2	Top 45 Corner	Cherry	UV	U	U	N	N	N	2	S
3	1	BCCOR S1	LazySusan Base	Cherry	UV	U	U	N	N	N	1	S
4	1	BCD1	Sink Base	Cherry	UV	U	U	N	N	N	0	S
5	1	BCCUSTOM	Base 4 Drawer	Cherry	UV	U	U	N	N	N	0	C
6	1	UCCUSTOM S1	Top Cabinet (Ref)	Cherry	UV	U	U	N	N	N	1	C
7	1	*Invalid*	Dishwasher/Panel	Cherry	UV	U	U	N	N	N	0	X
8	1	UC S2	Top Cabinet	Cherry	Cherry	F	U	N	N	N	2	S
9	1	T485 S6	Pantry	Cherry	UV	F	U	N	Y	N	6	S
10	1	BC	Tray Cabinet	Cherry	UV	U	U	N	N	N	0	S
11	1	*Invalid*	Base Cabinet	Cherry	UV	U	F	N	N	N	1	X
12	1	*Invalid*	Base Cabinet	Cherry	UV	F	U	N	N	N	1	X
13	1	*Invalid*	Top Cabinet	Cherry	UV	U	F	N	N	N	2	X
14	1	*Invalid*	Top Cabinet	Cherry	UV	F	U	N	N	N	2	X
15	1	BCD1 S1	Base Cabinet	Cherry	UV	U	U	N	N	N	1	S
16	1	BCD3	Cooktop 3 Drawer	Cherry	UV	U	U	N	N	N	0	S
17	1	BCCUSTOM	Base Cabinet	Cherry	UV	U	U	N	N	N	1	C
18	1	TCUSTOM	Waloven 2 Door	Cherry	UV	U	F	N	N	N	3	C
19	1	UC S1	Top Cab (Stove Mic)	Cherry	UV	U	U	N	N	N	1	S
20	1	UCCUSTOM	Top Cabinet	Cherry	UV	U	U	N	N	N	2	C
21	1	UC S2	Top Cabinet	Cherry	UV	U	U	N	N	N	2	S

Cabinotch account is set up

Project Name: test031.1 (max 15 characters)

Print preview

KCD Testing Services  
Cabinotch 2/13/2015

### Cabinotch Validation Report

Unit	Qty	Code	Description	Species	Int. Ply	Side L	Side R	3/4 Scribe L	3/4 Scribe R	3/4 Sides	Shelves	Type	Width	Height	Depth	Room
1	1	UC S2	Top Cabinet	Cherry	Cherry	U	F	N	N	N	2	S	33.0	36.0	12.0	Room 1
2	1	UCANG S2	Top 45 Corner	Cherry	UV	U	U	N	N	N	2	S	24.0	36.0	24.0	Room 1
3	1	BCCOR S1	LazySusan Base	Cherry	UV	U	U	N	N	N	1	S	36.0	34.5	36.0	Room 1
4	1	BCD1	Sink Base	Cherry	UV	U	U	N	N	N	0	S J	36.0	34.5	24.0	Room 1
5	1	BCCUSTOM	Base 4 Drawer	Cherry	UV	U	U	N	N	N	0	C J	21.0	34.5	24.0	Room 1
6	1	UCUSTOM S1	Top Cabinet (Ref)	Cherry	UV	U	U	N	N	N	1	C	36.0	21.0	12.0	Room 1
7	1	*invalid*	Dishwasher/Panel	Cherry	UV	U	U	N	N	N	0	X	24.0	34.5	24.0	Room 1
8	1	UC S2	Top Cabinet	Cherry	Cherry	F	U	N	N	N	2	S	33.0	36.0	12.0	Room 1
9	1	T485 S6	Pantry	Cherry	UV	F	U	N	Y	N	6	S	18.0	90.0	24.0	Room 1
10	1	BC	Tray Cabinet	Cherry	UV	U	U	N	N	N	0	S	9.0	34.5	24.0	Room 1
11	1	*invalid*	Base Cabinet	Cherry	UV	U	F	N	N	N	1	X	28.0	34.5	24.0	Room 2
12	1	*invalid*	Base Cabinet	Cherry	UV	F	U	N	N	N	1	X	32.0	34.5	0.75	Room 2
13	1	*invalid*	Top Cabinet	Cherry	UV	U	F	N	N	N	2	X	20.0	36.0	12.0	Room 2
14	1	*invalid*	Top Cabinet	Cherry	UV	F	U	N	N	N	2	X	18.0	36.0	0.75	Room 2
15	1	BCD1 S1	Base Cabinet	Cherry	UV	U	U	N	N	N	1	S J	18.0	34.5	24.0	Room 1
16	1	BCD3	Cooktop 3 Drawer	Cherry	UV	U	U	N	N	N	0	S J	36.0	34.5	24.0	Room 1
17	1	BCCUSTOM	Base Cabinet	Cherry	UV	U	U	N	N	N	1	C J	18.0	34.5	24.0	Room 1
18	1	TCUSTOM	Walloven 2 Door	Cherry	UV	U	F	N	N	N	3	C	33.0	90.0	24.0	Room 1
19	1	UC S1	Top Cab (Stove Mic)	Cherry	UV	U	U	N	N	N	1	S J	30.0	18.0	12.0	Room 1
20	1	UCUSTOM	Top Cabinet	Cherry	UV	U	U	N	N	N	2	C J	21.0	36.0	12.0	Room 1
21	1	UC S2	Top Cabinet	Cherry	UV	U	U	N	N	N	2	S J	33.0	36.0	12.0	Room 1
22	1	UCUSTOM S1	Ref Top Extended Side	Cherry	UV	F	U	N	N	N	1	C	36.0	90.0	24.0	Room 1
23	1	*invalid*	Refrigerator/Panel	Cherry	UV	U	U	N	N	N	0	X	34.0	71.0	24.0	Room 1
24	1	BCD1D2	Base Utility 2 Drawer	Cherry	UV	U	F	N	N	N	0	S	36.0	34.5	24.0	Room 1
25	1	*invalid*	Compactor/Panel	Cherry	UV	U	U	N	N	N	0	X	18.0	34.5	24.0	Room 1
26	1	BCPanelLeft	Base Panel Left	Cherry	UV	F	U	N	N	N	0	S	3.0	34.5	24.0	Room 1
28	1	BCD3	Base 3 Drawer	Cherry	UV	F	F	N	N	N	0	S	15.0	34.5	24.0	Room 1
29	1	BCCUSTOM S2	Base Cabinet No Drawer	Cherry	UV	U	U	N	N	N	2	C	48.0	40.5	12.0	Room 1
30	1	BCCUSTOM S2	Base Cabinet No Drawer	Cherry	UV	U	U	N	N	N	2	C	48.0	40.5	12.0	Room 1
31	1	*invalid*	Corbel Support	Cherry	UV	U	U	N	N	N	0	X	4.0	9.0	6.0	Room 1
32	1	*invalid*	Corbel Support	Cherry	UV	U	U	N	N	N	0	X	4.0	9.0	6.0	Room 1
33	1	*invalid*	Corbel Support	Cherry	UV	U	U	N	N	N	0	X	4.0	9.0	6.0	Room 1

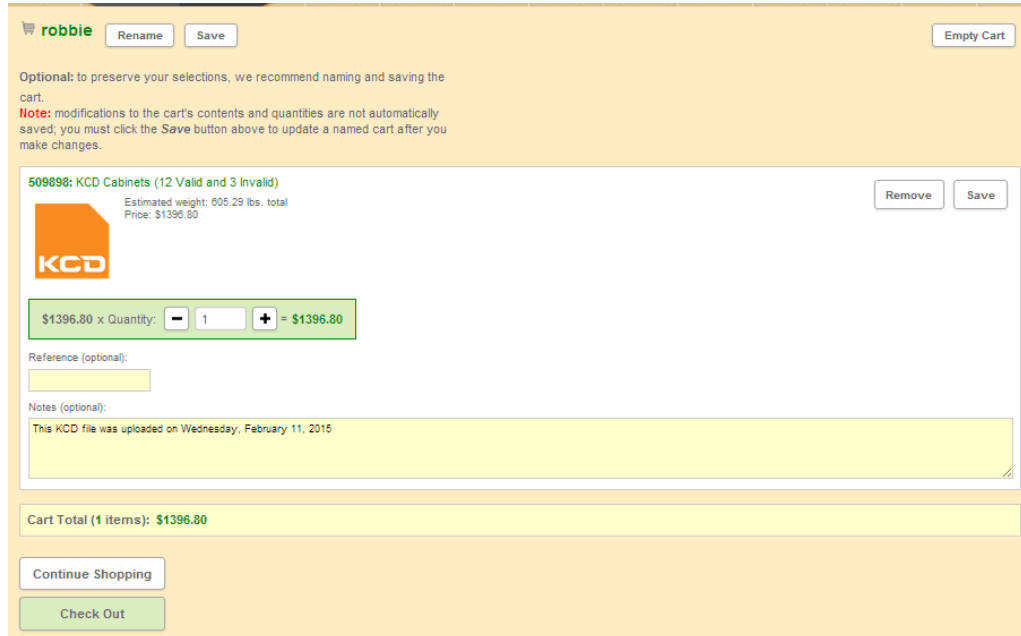
Int = Interior L = Left R = Right F = Finished U = Unfinished C = Custom Unit S = Standard Unit J = Joined Unit X = Invalid Unit XO = Invalid Options XL = Non Cabinotch Library H = Half Depth Shelves

The report has been cleaned up and reorganized to make reading a bit easier. This is important because if you have invalid units, they will not be priced or produced.

Once you click on the button "Request Quote", you will see this screen:

Base	Cherry	UV	U	U	N
	Cherry	UV	U	U	N
er	Cherry	UV	U	U	N
(Ref)					
Panel	Please wait, I'm calculating your quote				
	*Invalid* units not included in quote				
t					
t	Cherry	UV	F	U	N
	Cherry	UV	U	F	N
	Cherry	UV	F	U	N
t	Cherry	UV	U	U	N

If you followed all of the instructions presented here, your web browser will open the Cabinotch website and you will automatically logged in and shown your loaded cart:



You can now save the cart, or place your order.

No more creating desktop files, invalid cabinets due to forgetting to set your species, or even logging into the site.....just click and GO!!!

We believe you'll start to enjoy these improvements the first time you try the new One Click Quoting Tool. Please contact your Cabinotch sales rep or the Customer Service team with any questions!